

Providence



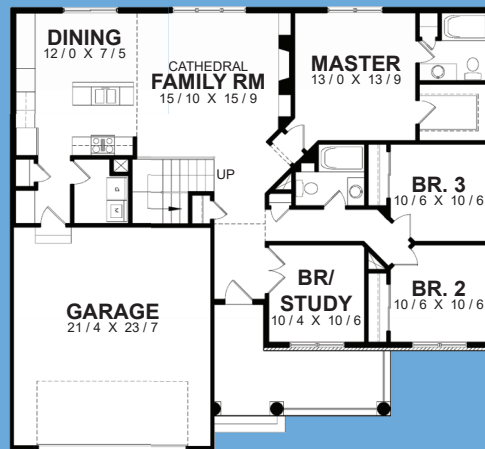
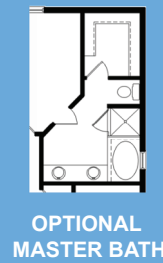
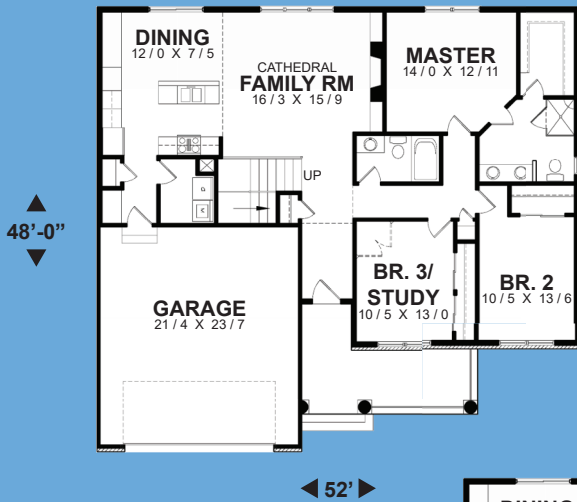
GREAT FOR EMPTY NESTERS

It's the little things - decorative eave vents, covered front porch, Anderson windows - that create the initial impression of this home. But it's the thoughtful floor plan that gives it lasting appeal. Consider, for instance, the placement of the master suite has a convenient separation allowing full livability of the main level for empty-nesters. Vaulted ceilings adorn the Great Room with energy efficient fireplace and optional built in bookcases. It has drop zone lockers next to a privet laundry. The kitchen features an island work area and has technology area built into cabinets. Don't overlook amenities in the master suite: a large walk-in closet, a fully appointed bath and an optional glass shower. The 24' deep garage will hold that new pickup truck if you choose or use it for those coveted big-boy toys.

Total Area 1608 Sq. Ft.

Width 52' Depth 48'-0"
Height 19'-8"

(815) 468 - 6573



ALTERNATE PLAN



curwickhomebuilders.com