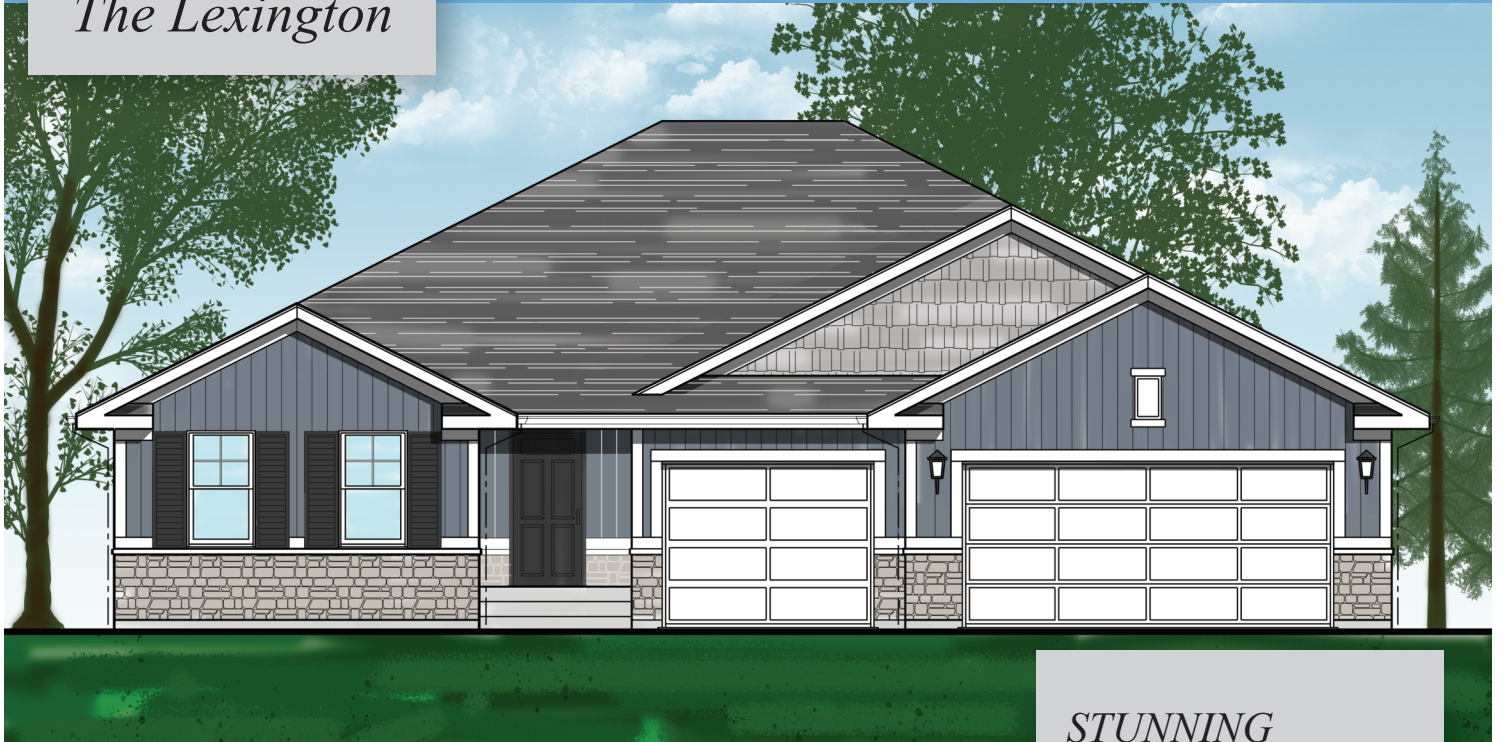


# The Lexington

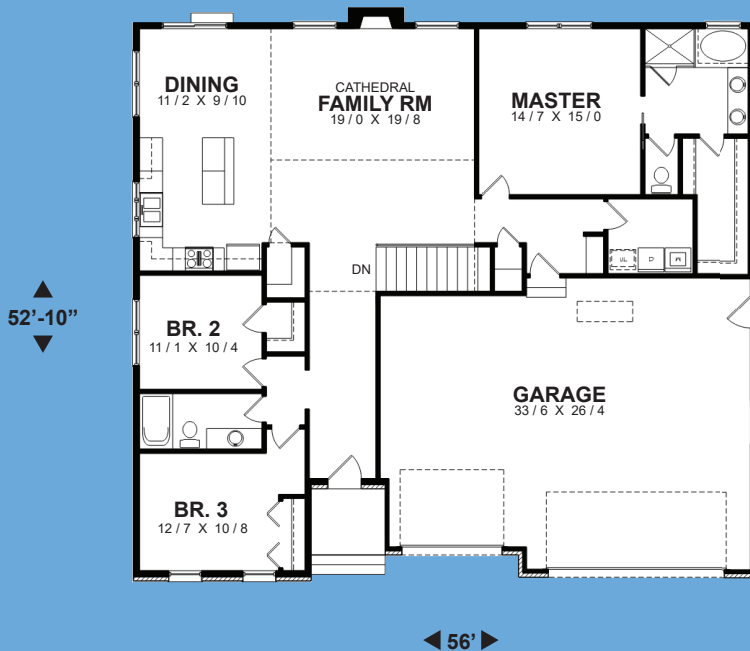


## STUNNING CRAFTSMAN

An affordable craftsman styled ranch house plan with 3 bedrooms and 2 baths. It features very large beautiful great room to host family and friends in stylish comfort. The plan places the master suite and secondary bedrooms on opposite sides for privacy and separation to older children and guests. The master bedroom includes a compartmented bath, a soothing spa tub, a spacious shower, and a large walk-in closet. The 3rd bedroom contains a bump-out space for seating.

The Kitchen has a walk-in pantry, eating area and plenty of storage for an active family including an eating bar for serving food and casual dining.

The Lexington plan suits young expanding families and seasoned couples alike.



Total Area 1857 Sq. Ft.

Width 56' Depth 52'-10"  
Height 22'-4"

(815) 468 - 6573

