

*Prairie*

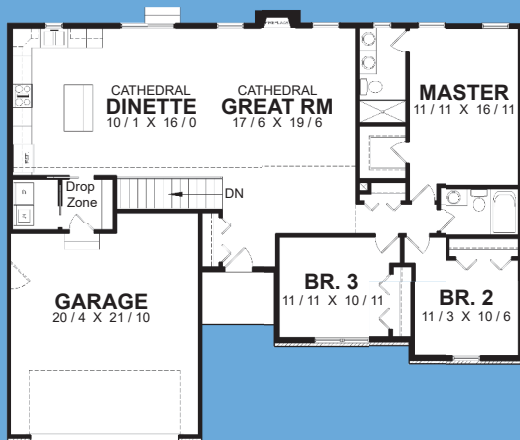


*CHARMING RANCH*

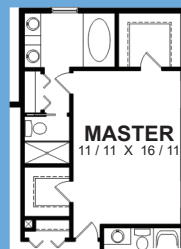
Surprises wait on the inside of this well designed home, from the vaulted great room to the separate laundry space, to the full basement.

Some exceptional details you won't want to miss include: a fireplace in the great room, hand scraped hardwood floors, granite counter tops and a drop zone off of the garage entrance.

The master suite comes with a five foot shower, walk-in closet and ceiling fan. Bedroom 2 & 3 have ample space for kid's personal space.

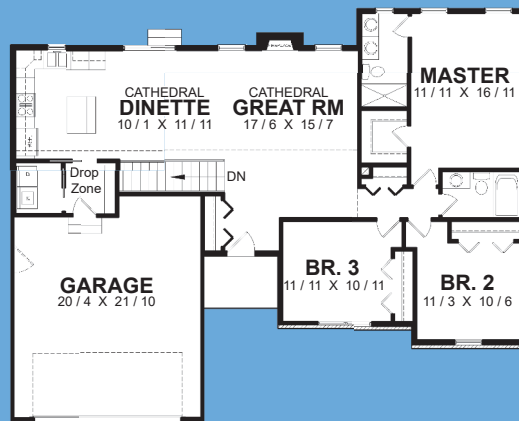


ALTERNATE PLAN



ALTERNATE MASTER BATH

45'-4"



56'-0"



curwickhomebuilders.com

Total Area 1500 Sq. Ft.  
(Alt.) 1650 Sq. Ft.

Width 56'-0" Depth 45'-4"  
Height 17'-7"

(815) 468 - 6573