

Petoskey House



OPEN LAYOUT

A cozy front porch provides an appealing entrance to a spacious and carefully designed two story home plan with first and second level 9' ceilings, 4 bedrooms and 3 baths, which includes a guest suite on the main level.

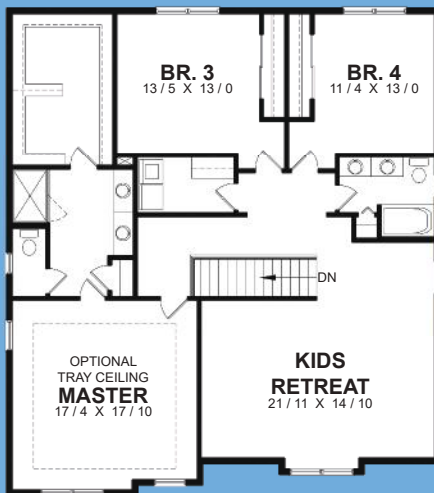
You first walk into the foyer which provides access to a study/living room. Beyond, you will find a grand family room which is open to the kitchen and dining area. The kitchen layout includes a generously sized island providing potential for great storage, display, and functionality.

Upstairs you will find 3 bedrooms, which includes an exquisite master bedroom. The master features an optional tray ceiling and a huge walk-in closet. Also, you will find an enormous kids retreat area.

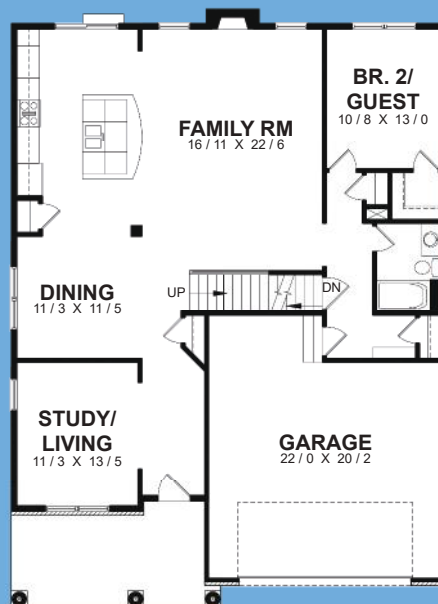
Total Area 3204 Sq. Ft.

Width 40'-8" Depth 54'-6"
Height 31'-10"

(815) 468 - 6573



SECOND FLOOR PLAN



FIRST FLOOR PLAN

54'-6"

40'-8"



curwickhomebuilders.com